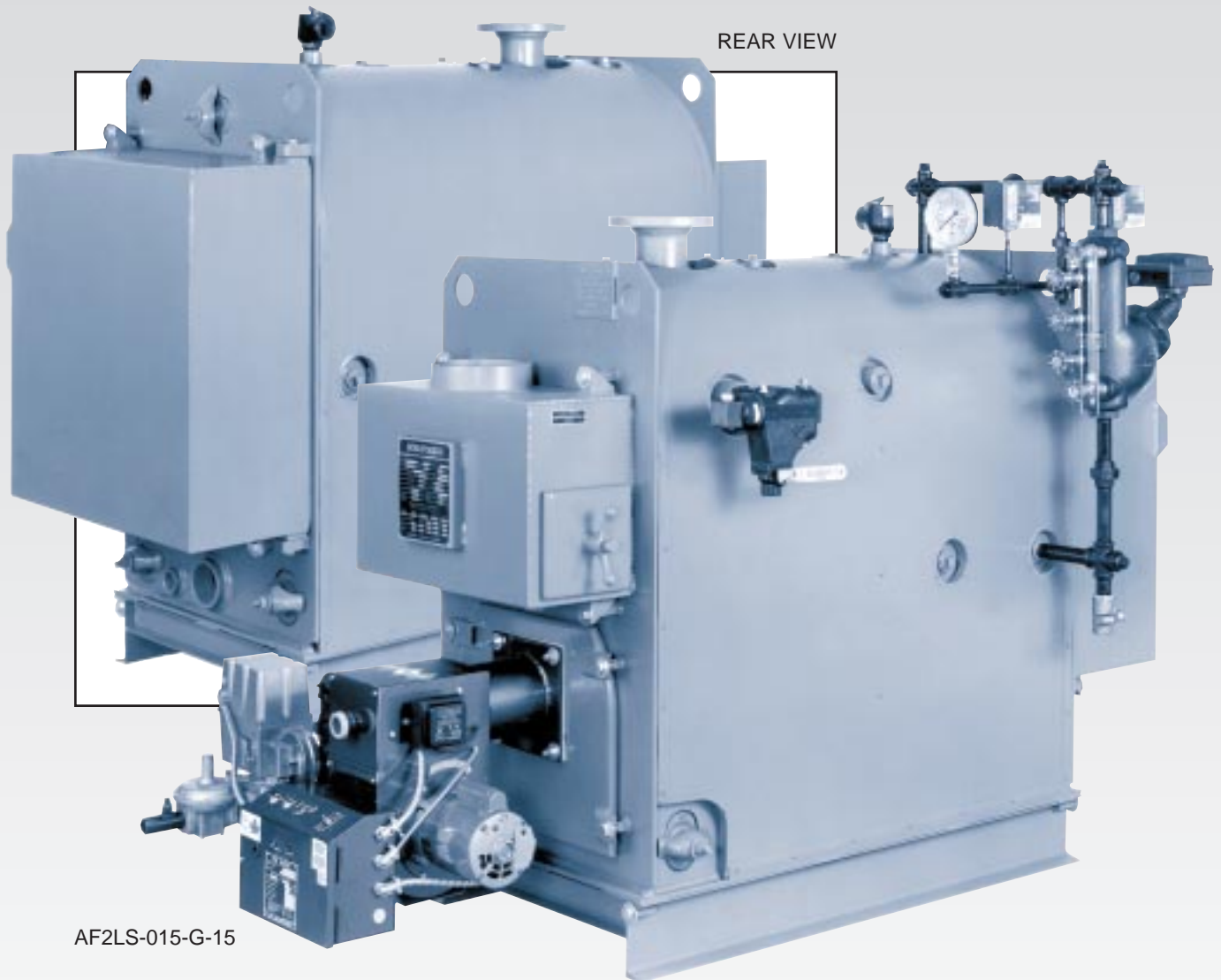


BOILERSMITH^{CO}

ALLSTAR



EXTRA NARROW
BOILERS FROM
■ CANADA'S 🔧 BOILER 🔧 MAKER ■

AF2 SERIES

PACKAGED
FIRETUBE
DESIGN

15#S
30#W

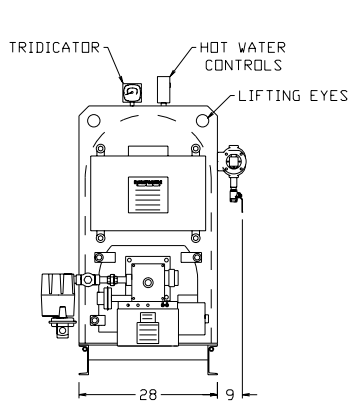
ENHANCED
PERFORMANCE

AF2 ALLSTAR SERIES

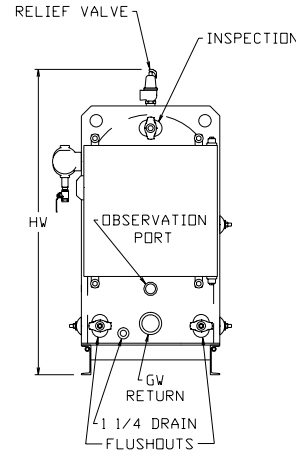
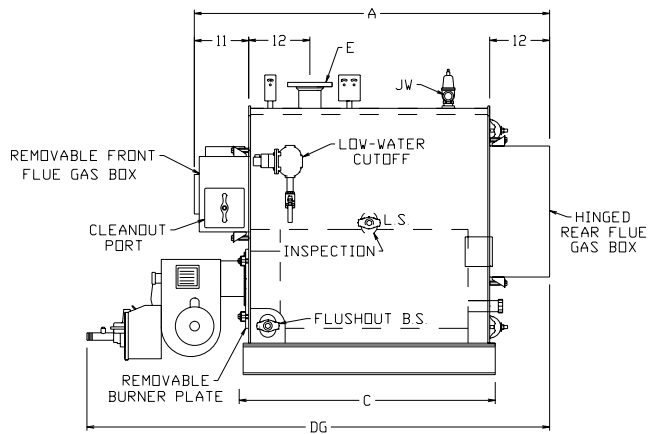
HIGHER
ECONOMY

10 TO
35 HP

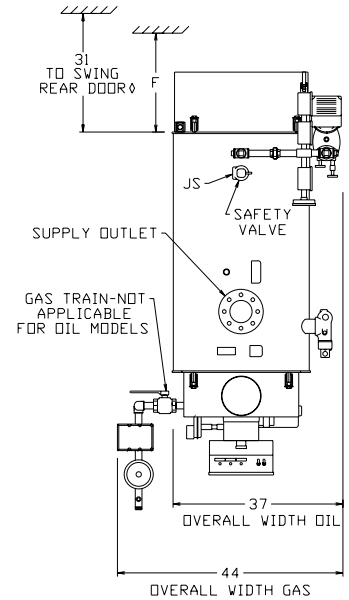
EXTRA NARROW PACKAGED STEEL BOILERS



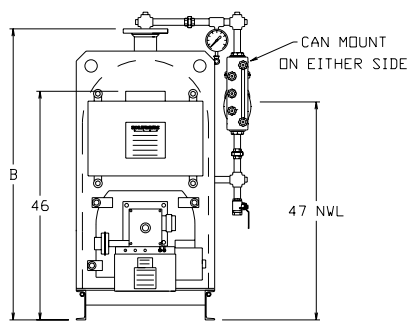
VIEW SHOWING GAS BURNER AND HOT WATER TRIM



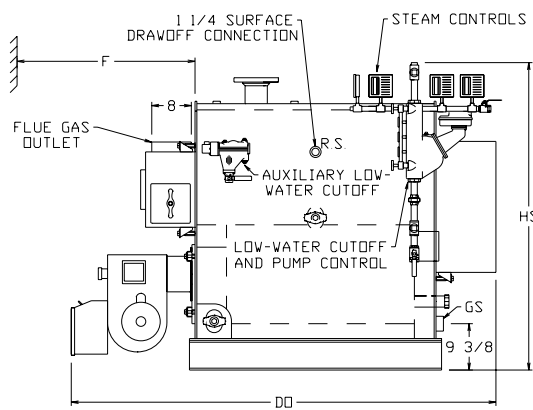
REAR VIEW



TOP (PLAN) VIEW
(GAS BURNER/
STEAM TRIM)



VIEW SHOWING OIL BURNER AND STEAM TRIM



GAS FIRED
•
OIL FIRED
•
GAS/OIL FIRED

MODEL No. DESIGNATION

AF2LW - 15 - G - 30	
LS-LOW PRESSURE STEAM	DESIGN PRESSURE
LW-LOW PRESSURE WATER	15 PSIG STEAM
	30 PSIG WATER
	O-OIL
	G-GAS
	GO-GAS/OIL
	P-PROPANE

15#S AF2 ALLSTAR SERIES SPECIFICATIONS 30#W

	10	12	15	20	25	30	35
HORSEPOWER	10	12	15	20	25	30	35
GROSS OUTPUT MBH	335	402	502	669	837	1004	1172
FIRING RATE INPUT GAS MBH	404	484	605	806	1008	1210	1412
FIRING RATE INPUT OIL USGPH	2.88	3.46	4.32	5.76	7.20	8.64	10.1
WATER CAPACITY FULL IMP GAL	75	90	108	133	151	168	189
WATER CAPACITY NWL IMP GAL	67	80	95	118	133	148	170
HEATING SURFACE	60	75	90	112	125	140	160
SHIPPING WEIGHT	1900	2000	2250	2600	2800	3050	3350

ALL DIMENSIONS ARE TO THE NEAREST INCH

GENERAL		10	12	15	20	25	30	35
A BARE BOILER LENGTH		56	64	72	84	92	100	110
B BARE BOILER HEIGHT		54	54	58	58	58	58	58
C BASE LENGTH		35	43	51	63	71	79	89
DO OVERALL LENGTH OIL		71	79	87	99	107	115	125
DG OVERALL LENGTH GAS		75	83	91	103	111	119	131
E SUPPLY SIZE		2.5	3	4	4	4	4	4
F TUBE REMOVAL		34	42	50	62	70	78	88
WATER								
GW RETURN SIZE		2.5	3	3	3	3	3	3
HW OVERALL HEIGHT		62	62	62	62	62	62	62
JW RELIEF VALVE OUTLET SIZE		1	1	1	1.25	1.25	1.25	1.5
STEAM								
GS RETURN SIZE		1	1	1	1	1	1	1
HS OVERALL HEIGHT		62	62	62	62	62	62	62
JS SAFETY VALVE OUTLET SIZE		1.25	1.25	1.5	1.5	2	2	2

WIDTHS SHOWN REFLECT STANDARD 1" SHELL INSULATION
4" CONNECTIONS ARE 150# FLANGES, ALL OTHERS ARE THREADED
MODELS ARE AVAILABLE WITH HIGHER DESIGN PRESSURES
BOILER TUBES MAY BE DRAWN FROM EITHER END
R.S.=RIGHT SIDE, L.S.=LEFT SIDE
◇ DOOR CAN BE LIFTED OFF IN TIGHT QUARTERS

SINGLE STAGE FIRING IS STANDARD UNDER 30 HP.
TWO STAGE FIRING IS STANDARD ON 30 AND 35 HP
FULL MODULATING FIRING IS AVAILABLE ON GAS MODELS
WE ASSUME NO RESPONSIBILITY FOR ERRORS IN DATA
CERTIFIED DIMENSIONS, SPECIFICATIONS AND DRAWINGS
ARE AVAILABLE ON REQUEST

AVOID PROBLEMS
WITH AVAILABILITY OF
REPLACEMENT SECTIONS
FOR CAST IRON BOILERS

AVOID CRACKS
IN CAST IRON CAUSED
BY SEDIMENT AND SCALE

PURCHASE
TOUGH, LONG-LASTING
STEEL BOILERS FROM
BOILERSMITH

OUR STANDARD BOILER
PLATE AND STRAIGHT
TUBES ARE
NEVER OBSOLETE

BOILERSMITH

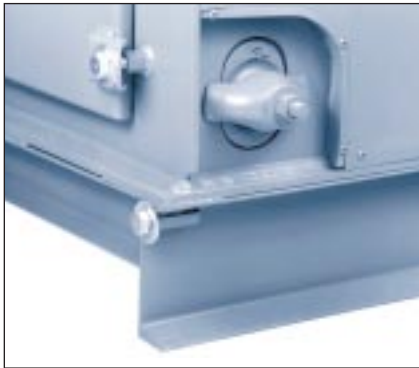
AF2 ALLSTAR SERIES

THE ALLSTAR ADVANTAGE

- * EXPANDED RANGE OF MODELS *
- * THOUGHTFUL NEW FEATURES *

- HERE ARE A FEW HIGHLIGHTS -

- Easy entry through narrow doorways
- 28 inch EXTRA NARROW width (less trim)
- Enhanced STEEL design
- Improved firetube configuration
- Heavy-duty, first-class materials
- Textured steel jacket, high temp. paint with clearcoat
- Factory test-fired
- Fully assembled
- Lower parts costs
- Low service costs
- Engineered to last
- Space-saving
- Top plant efficiency
- Skillfully crafted
- REAL boiler construction
- Created with extensive design experience
- Equipped with reliable, premium, packaged, FORCED DRAFT burners
- "Off the shelf" components
- High quality - exceptional value



- Built for quick, easy service and maintenance

STANDARD STEAM TRIM

- Safety valve(s)
- Water glass set
- Pressure gauge
- Gauge cock
- Pressuretrol line drain
- Trycocks
- Pressuretrol - high limit safety
- Pressuretrol - operating
- Pressuretrol - high fire control (30 HP and over)
- McDonnell Miller 157 low water cutoff and pump control c/w water column blowdown valve
- McDonnell Miller 767 auxiliary low water cutoff control c/w blowdown valve



- Outstanding inspection accessibility

OPTIONS AND ALTERNATIVES

- We specialize in customizing your boiler. The Allstar can be equipped to suit a wide variety of installations and specifications. We will help direct you to the most cost-effective models and features.



- Durable, proven 2-pass firebox arrangement
- Ample steam space and steam release area give dry steam

STANDARD HOT WATER TRIM

- Relief valve(s)
- Water temperature indicator and water pressure indicator
- McDonnell Miller 764 low water cutoff c/w blowdown valve
- Operating temperature control
- High limit temperature control
- High fire temperature control (on sizes 30 HP and over)



- Generous furnace volume for conservative heat release
- Large primary heating surface

Represented by:

BOILERSMITH
■ CANADA'S BOILER MAKER ■

P.O. Box 70, 156 Main Street South
Seaford, Ontario N0K 1W0
Tel: (519) 527-0600 Fax: (519) 527-0150

Bulletin No. CAD 1AF2-27-06M-94

Printed in Canada on Recycled Paper

